

# Port Clinton Yacht Club COMMODORE'S CUP RACE

Saturday, August 17, 2024

## SAILING INSTRUCTIONS

### 1. RULES

The regatta will be governed by the "*The Racing Rules of Sailing*", except as altered by these Sailing Instructions.

### 2. ENTRY FEE & NOTICE TO COMPETITORS

An Entry Fee of \$30.00 shall be paid to the FCoS at the Competitor's Meeting by each boat competing in the Commodore's Cup Race. Notices to competitors will be posted on the Official Notice Board located at the Port Clinton Yacht Club riverfront deck. Changes to the Sailing Instructions will be posted no later than the one hour gun.

### 3. CHANGES TO SAILING INSTRUCTIONS

Any changes to Sailing Instructions will be posted before 10:00 am.

### 4. SIGNALS MADE ASHORE

Signals made ashore will be displayed from the riverfront yardarm. If a postponement is signaled ashore, the warning signal will be made not less than thirty (30) minutes after flag AP is lowered. This changes race signal rule 'AP'.

### 5. SCHEDULE

The warning signal for the first race will be at 10:55 am.

One hour gun	1000
Warning signal	1055
Commodore's Cup Start – PHRF and JAM	1100

### 6. THE COURSES

#### PHRF

The marks of the course are the Starting line (northeast of the Portage River entrance, the course: Catawba Island Can buoy G "1" (Mark #1), "F" Can (Mark #2), and the Finish Line, whose coordinates are approximately N41° 32.1', W82° 56.6'. Marks are to be left to port.

#### JAM

The marks of the course are the Starting line (northeast of the Portage River entrance, the distance depending on the wind speed), Catawba Island Can buoy G "1" (Mark #1), and the Finish Line, whose coordinates are approximately N41° 32.1', W82° 56.6'. Marks are to be left to port.

### 7. MARKS

7.1 Mark #1 shall be the green navigation aid, buoy G "1", commonly referred to as the "Catawba Island Can". Mark #2 shall be yellow navigation aid, Y "F", at the corner of the firing range. The start and finish lines shall be marked by an inflatable buoy(s) and a Committee Boat.

7.2 If the Race Committee is damaged as a result of a boat breaking a rule, that boat shall pay for repairs.

### 8. THE START

8.1 Races shall be Pursuit Starts with highest rated boats starting first with a warning signal at 1055 and first start at 1100 using a five (5) minute starting sequence.

8.2 The starting line shall be between a staff attached as an extension to the Race Committee Signal Boat displaying a Race Committee flag at the starboard end of the starting line, and the course side of the port end mark, all northeast of the Portage River entrance. A limiting mark may be set by the race committee signal boat.

### 9. THE FINISH

The finish line will be between a staff on the race committee signal boat displaying a race committee flag on one end, and the course side of the end marker buoy on the opposite end. A limiting mark may be set by the race committee signal boat.

### 10. TIME LIMIT

There will be no time limit.

**11. PROTESTS**

- 11.1 The protest time limit is thirty (30) minutes after the Race Committee boat has returned to its dock, and applies to all protests, and to request for redress.
- 11.2 Protests will be heard as soon as possible after racing in the sail garage.

**12. SCORING**

The Performance Handicapping Scoring System will apply, using Time on Distance.

**13. The Commodore's Rules**

For every PC on the boat; said boat will receive 2 seconds a mile off their total corrected time.

For every Flag and or board member on the boat; said boat will receive 1 second a mile off their total corrected time.

The boat with the oldest crew member will receive 1 second off their total time.

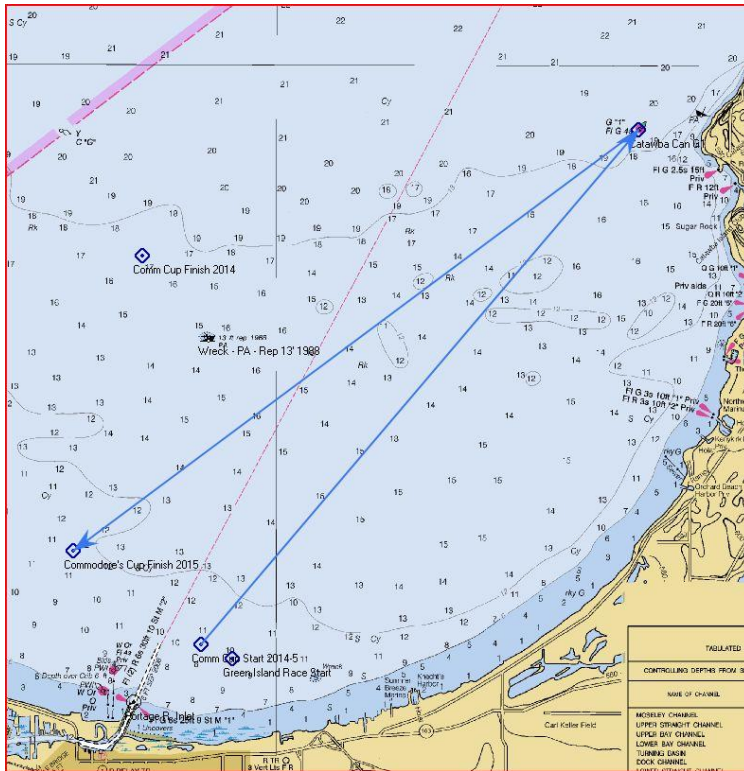
The boat with the youngest crew member will receive 1 second off their total time.

The commodore will a special lottery to be given at the captains meeting.

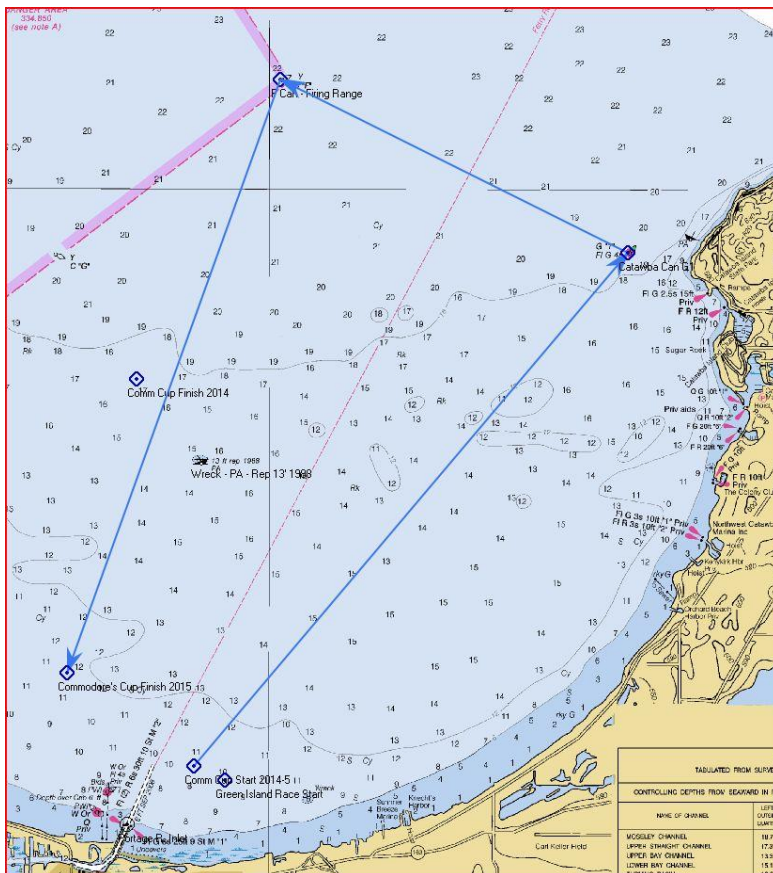
**14. AWARDS**

There will be awards for first (1<sup>st</sup>) through third (3<sup>rd</sup>) place. The Commodore's Cup will be awarded to the first PCYC boat to finish on corrected time in the PHRF class, or if there is no PCYC boat in the PHRF class, to the first PCYC boat to finish on corrected time in the JAM class.

## JAM Course Diagram (approx. 8.3 nm)



## PHRF Course Diagram (approx. 10.3 nm)



Course diagrams were made with OpenCPN 4.4.0 (<http://opencpn.org/opcn/>).